

# MONTHLY MEMBERSHIP PROGRESS REPORT

LOCATION PENNSYLVANIA

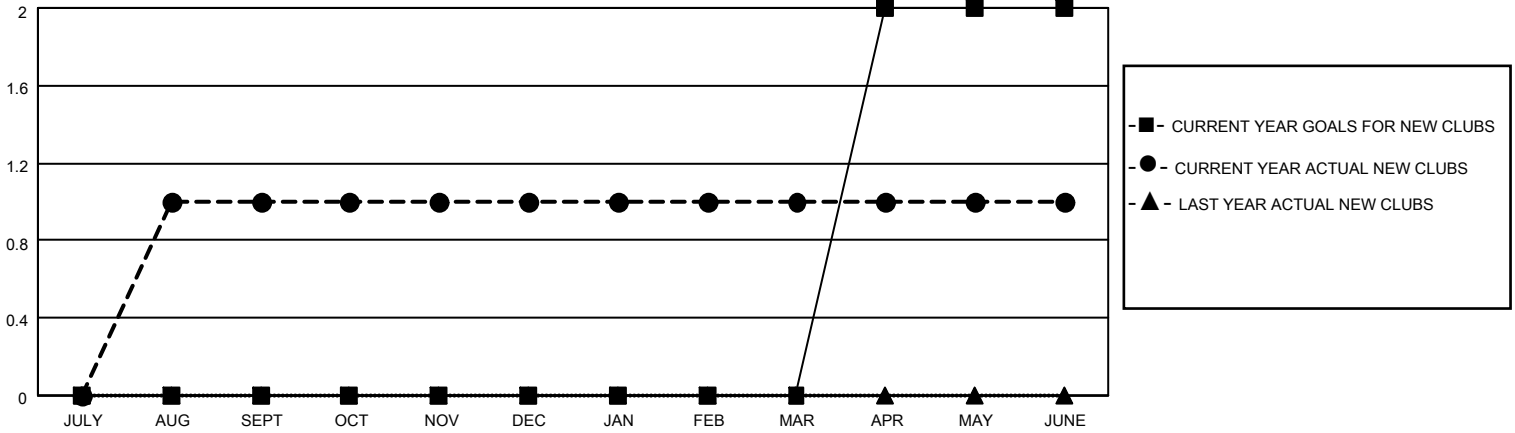
District 14 K

Results as of: 6/30/2023

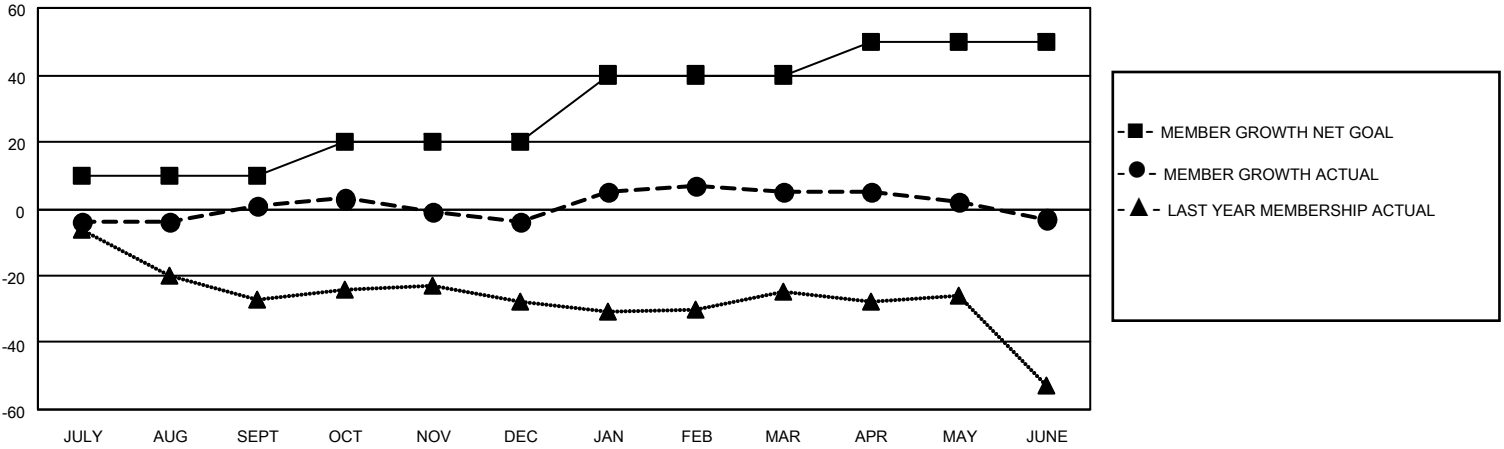
Clubs			
RESULTS FOR 2022-2023			
QUARTER	NEW CLUB GOAL	NEW CLUBS	DROPPED CLUBS
JULY/AUG/SEPT	0	1	1
OCT/NOV/DEC	0	0	0
JAN/FEB/MAR	0	0	0
APR/MAY/JUNE	2	0	0

Members			
RESULTS FOR 2022-2023			
QUARTER	MEMBER GROWTH NET GOAL	MEMBER GROWTH ACTUAL	DROPPED MEMBERS ACTUAL (including transfers)
JULY/AUG/SEPT	10	32	31
OCT/NOV/DEC	10	9	14
JAN/FEB/MAR	20	26	11
APR/MAY/JUNE	10	19	24

**GOALS AND ACTUAL NEW CLUBS CUMULATIVE**



**GOALS AND ACTUAL MEMBERS CUMULATIVE**



**DROPPED CLUBS: 1**

**18 CLUBS OF 29 ADDED 1 OR MORE NEW MEMBERS**

**GENDER DISTRIBUTION**

MALE	453 (63.18%)
FEMALE	263 (36.68%)
NON BINARY	0 (0.00%)
PREFER NOT TO ANSWER	1 (0.14%)

**DROPPED MEMBERS**

[CLICK HERE FOR CUMULATIVE MEMBERSHIP DATA](#)

DECEASED	18
CLUB CANCELLED	0
OTHER	62
<b>TOTAL</b>	<b>80</b>

TOTAL FAMILY UNIT MEMBERS	97
FAMILY MEMBERS PAYING HALF DUES	50